

Please read before assembly and installation of Feelux product

1. Before attempting to install or use fixture, read and understand the installation instructions and safety labels. If you have any questions, please contact Feelux Technical support at 678-668-7005 ext 4.
2. Feelux product must be installed by a qualified electrician in accordance with all national and local electrical and construction codes and regulations.
3. Ensure that the main power supply is off before installing or wiring a fixture.
4. Ensure that the power to the series is off before connecting or disconnecting individual fixtures.
5. Do not use a fixture if the unit, lens, housing or power cables are damaged.
6. Do not attempt to repair. Fixtures have no serviceable parts and there is risk of shock.
7. Do not use a fixture for any voltage for which it is not rated. Do not exceed the specified voltage and current input for any fixtures.
8. The screws included are for millwork. Please use the appropriate screws for the application.
9. This device complies with Part 15 of the FCC rules.
10. Class B Digital Apparatus complies with Canadian ICES-003

Step 1. Verify electrical plan.

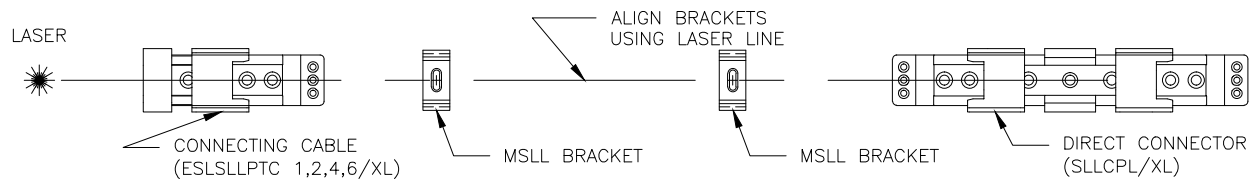
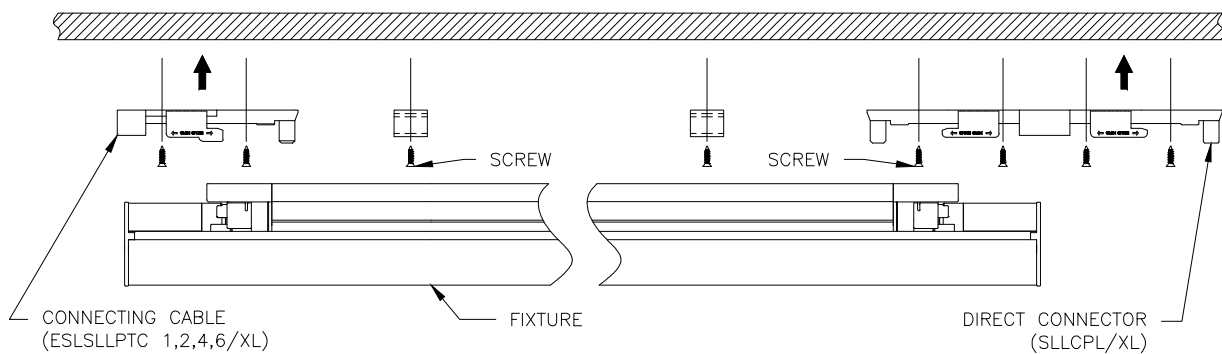
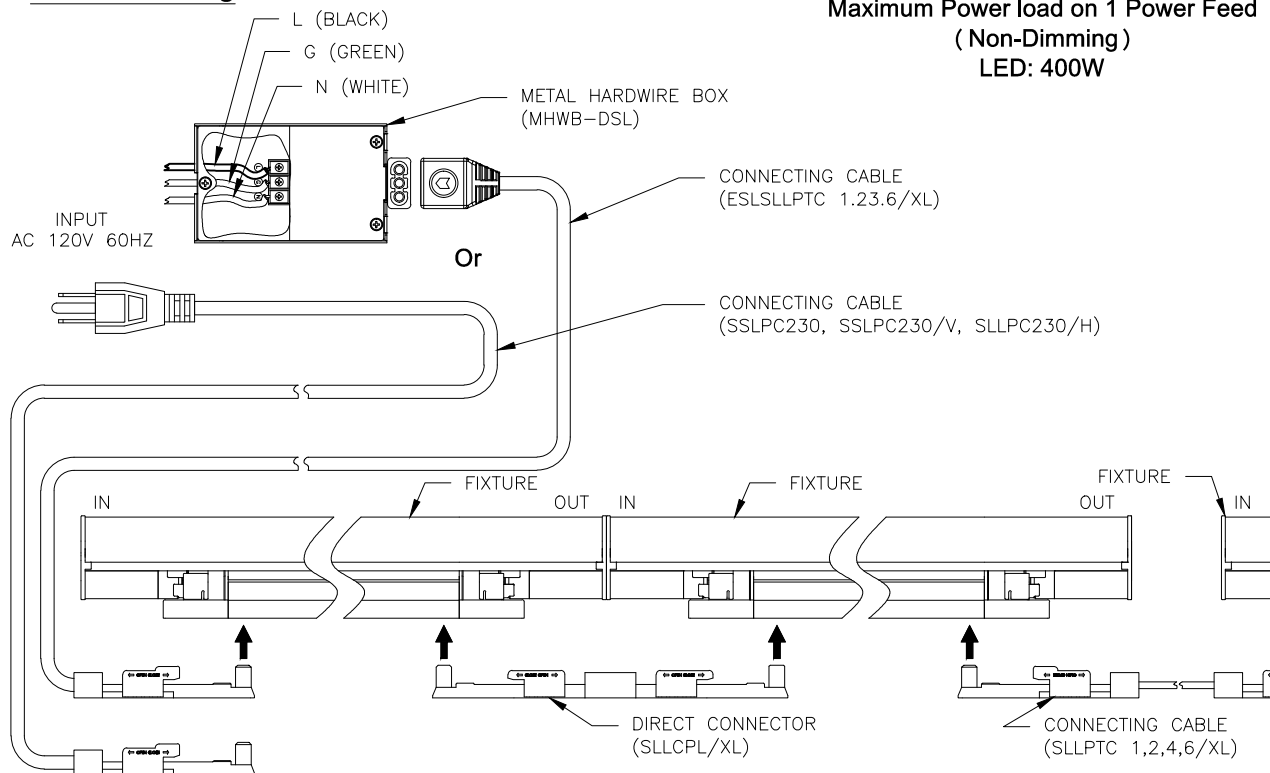
1. Calculate the number of fixtures each circuit can support based on: model of fixture, circuit load and cable length.
2. Total lamp wattage in one lighting row Maximum 400W
3. If you have questions, contact your local Feelux representative or Feelux.

Step 2. Check that all components are on site.

Step 3. Installation / Mounting

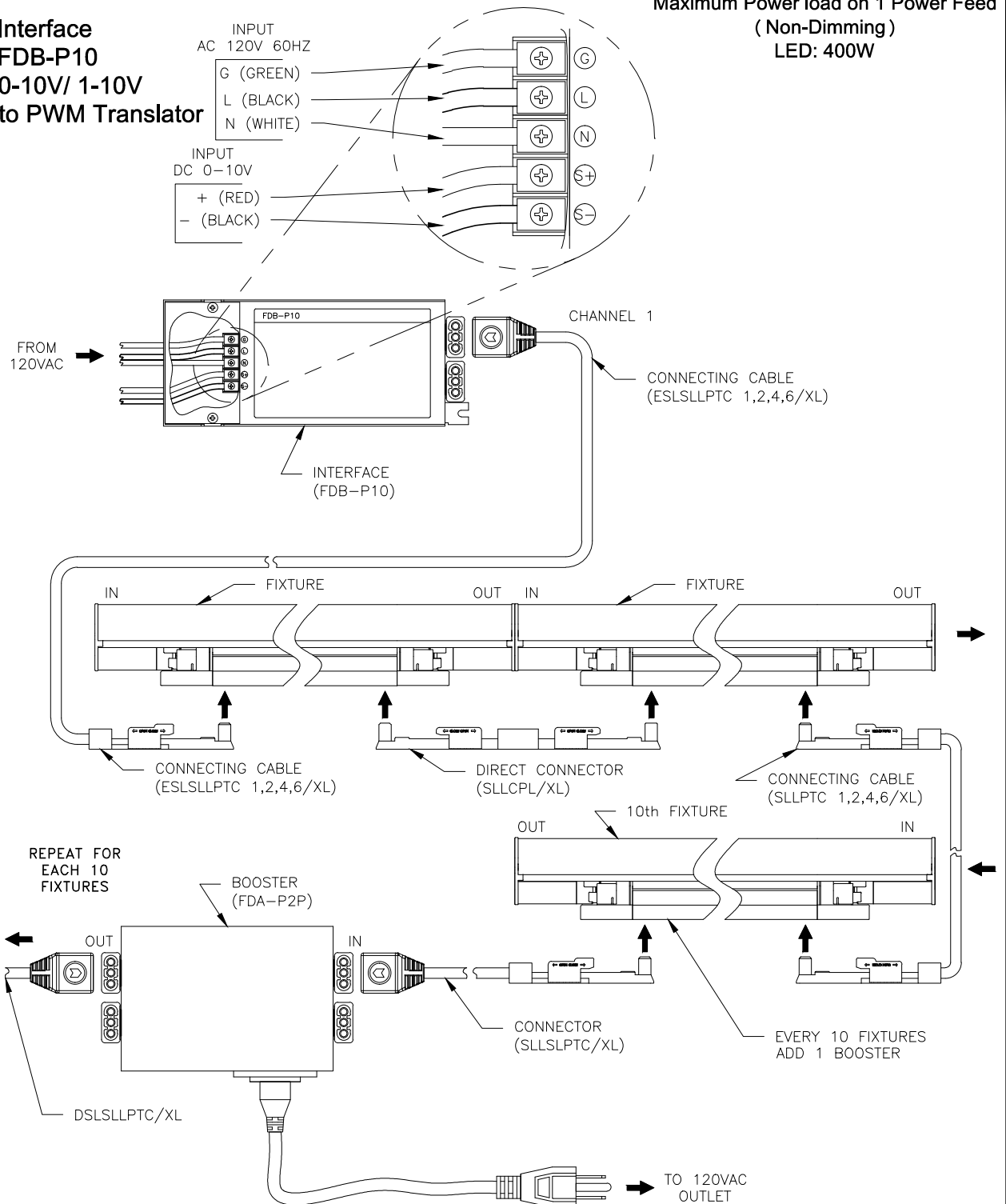
Always requires two person installation for fixture runs longer than 4 feet!

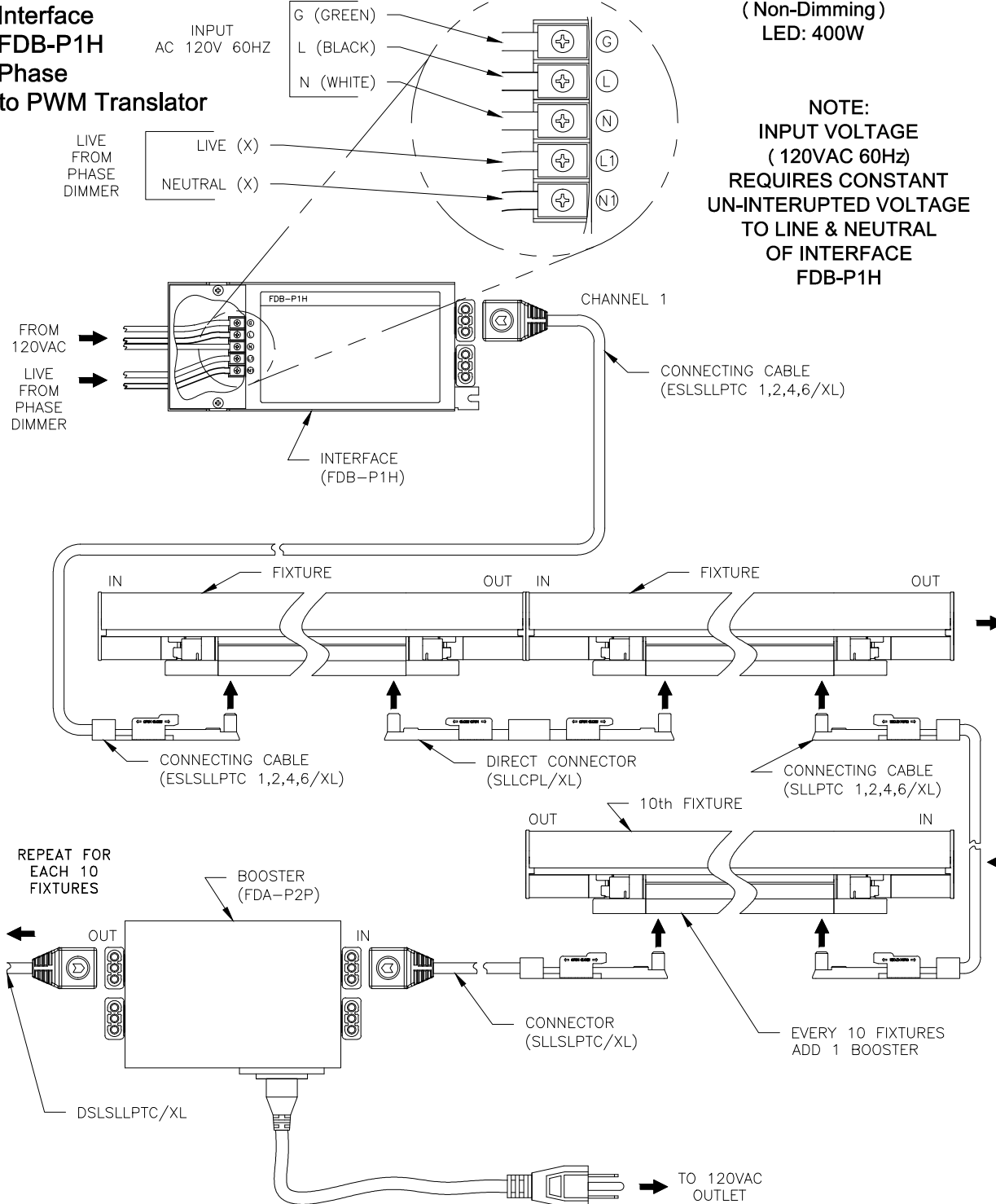
Align all brackets using laser line

**MOUNTING TO WOOD SURFACE****Non - Dimming**

Step 4. Connecting Fixtures

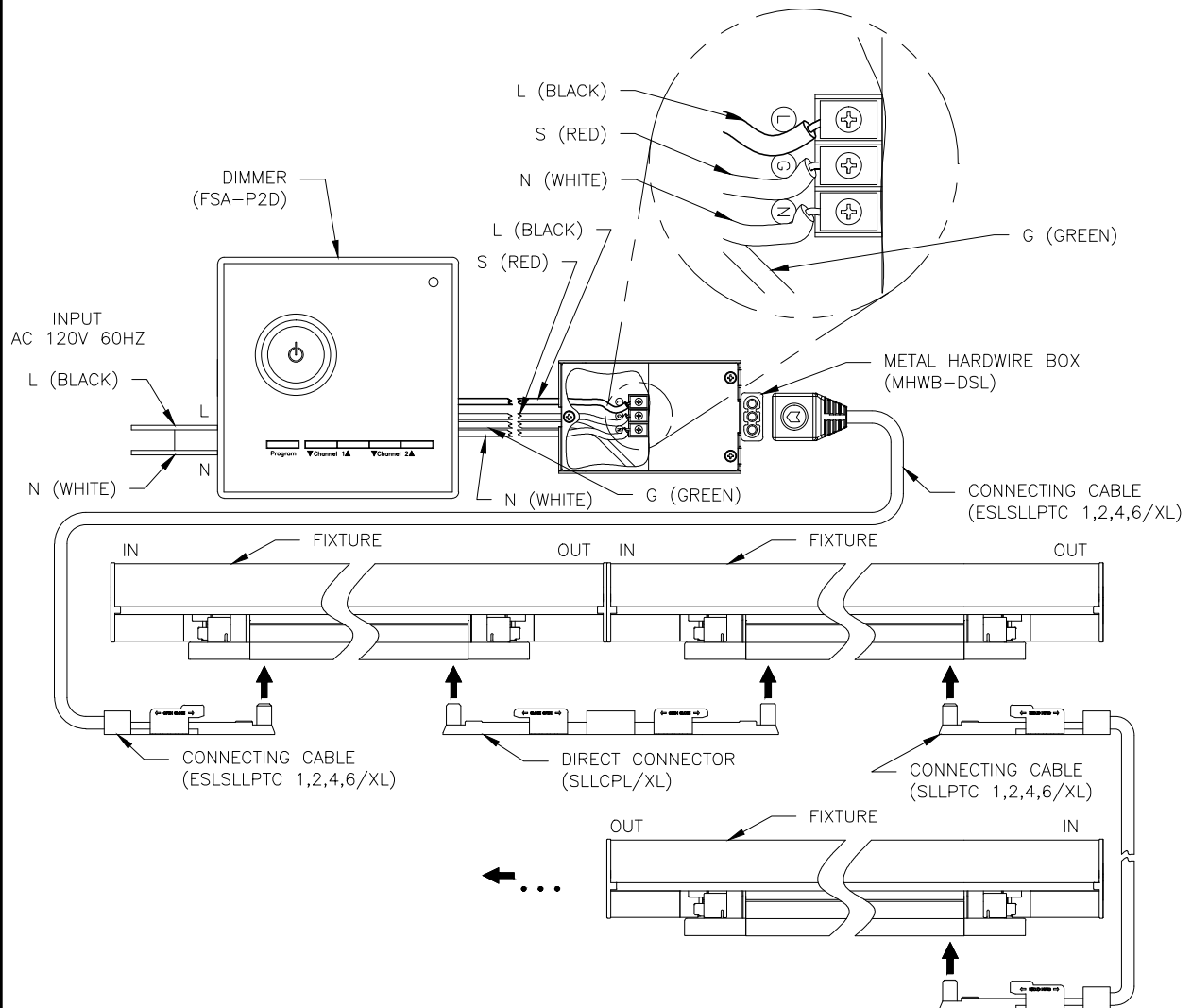
**Interface
FDB-P10
0-10V/ 1-10V
to PWM Translator**



Step 4. Connecting Fixtures**Interface
FDB-P1H
Phase
to PWM Translator**

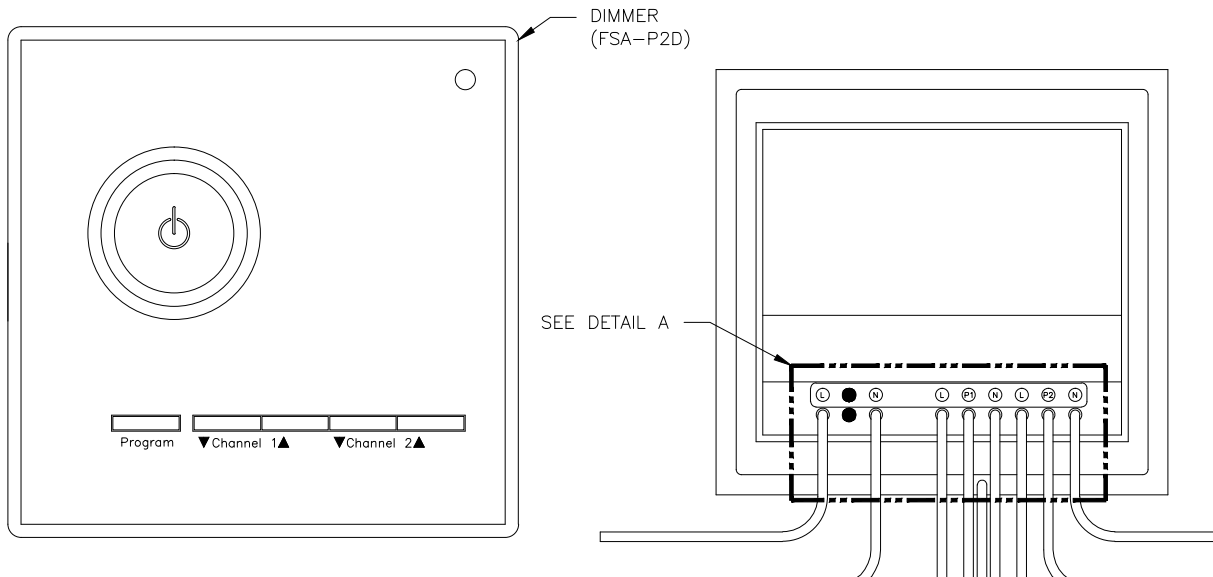
Step 4. Connecting Fixtures**Power and Dimming Connection**

AC FLX -Slimline LED
Maximum Power load on 1 Power Feed
(Non-Dimming)
LED: 400W



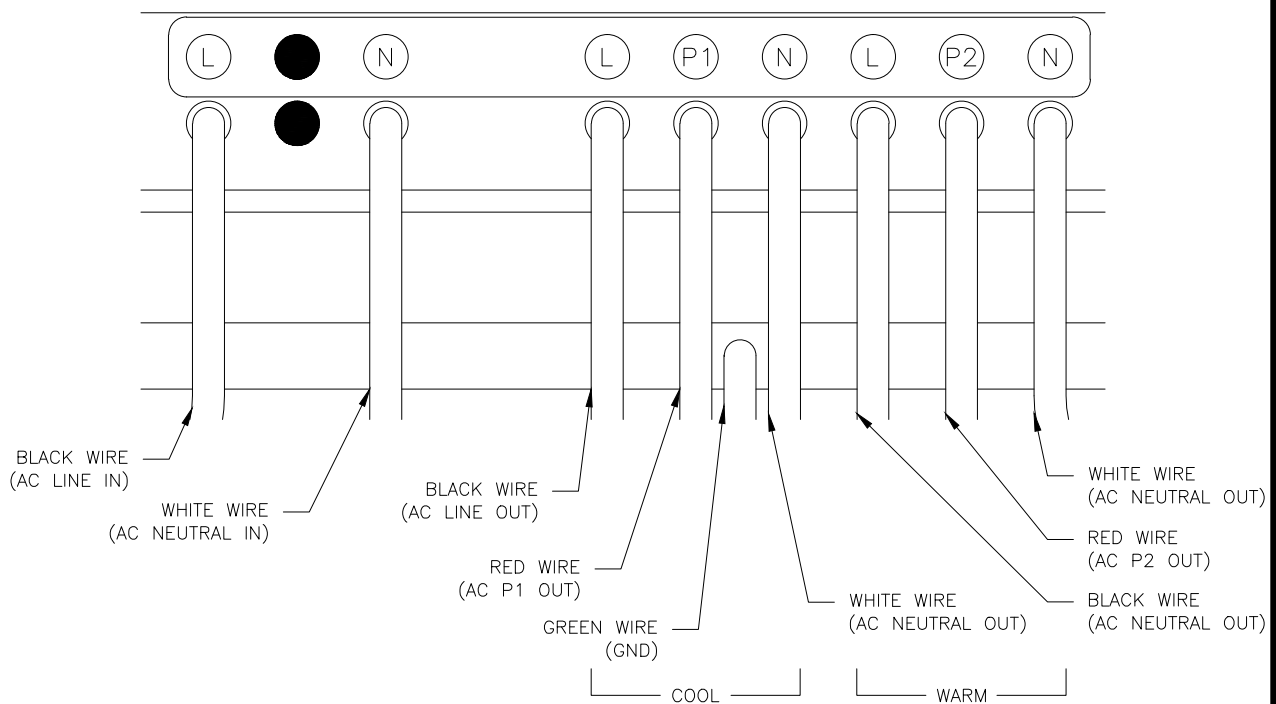
Step 4. Connecting Fixtures FEELUX Controller Power and Dimming Connections

AC FLX -Slimline LED
Maximum Power load on 1 Power Feed
(Non-Dimming)
LED: 400W



FRONT VIEW

REAR VIEW



**DETAIL A
DIMMER WIRING**